

SUN PATCH



PRODUCT DESCRIPTION

Sun Patch is a product that enhances the production of endogenous melanin, and protects the skin against radiation and a tanning accelerator.

The main objectives are:

1. Strengthen the skin's natural defenses against the sun, improving the predisposition of the skin against solar radiation.
2. Mitigate the effects of aging [specifically photoaging].
3. Accelerate and prolong the tan and improve its color profile [balance between red and yellow].

Sun Patch is effective for both sun exposure and UVA radiation.

MECHANISM OF ACTION

Sun Patch is composed of a waterproof sheet with an adhesive layer, which contains the active ingredients dispersed.

This adhesive, in contact with the skin, gradually releases the active ingredients, achieving a sustained and expansive action through the epidermis.

The components of **Sun Patch** provide the skin with the nutrients it needs to ensure and promote a correct and homogeneous melanin production.

THE ACTIVE INGREDIENTS

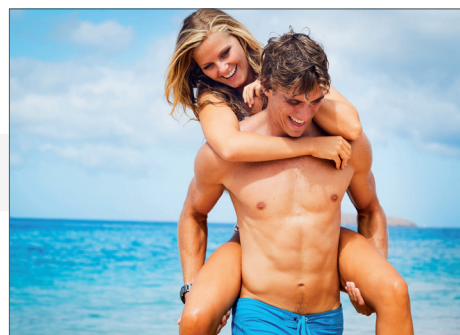
TYROSINE: It is the amino acid precursor of melanin. It stimulates melanin and skin pigmentation, and therefore increases the protection of the skin from the sun. It stimulates both eumelanin and pheomelanin, maintaining the balance between them and improving the color profile of the tan obtained.

TOCOFERIL ACETATO (VIT E). It is the antioxidant par excellence. It is naturally present in the oils in nature to prevent rancidity. Increases blood flow in the skin, oxygenates and regenerates tissues, which gives them elasticity and reduces wrinkle formation. It helps protect the skin from the sun by increasing the immunity of the skin and neutralizing the free radicals generated by UV rays. It prevents the inflammation of tissues and collaborates in the repair of scars.

FRUIT MALPIGHIA GLABRA EXTRACT (ACEROLA): Extract of the fruit of the acerola rich in vitamin C, in vitamin A and Niacin. The antioxidant qualities of acerola make it an ideal ingredient in skin care products to combat cell aging.

XANTHOPHYLL (LUTEINA): Lutein is able to absorb blue light from the visible spectrum and acts as an antioxidant against free radicals generated by UV radiation. It helps protect the skin against light-induced cell proliferation.

SUN PATCH



BETA CAROTEN: It is a natural pigment present in yellow-orange fruits and vegetables. It is the precursor of vitamin A that promotes the appearance of tanning. It provides a tan-like color in the upper layers of the skin without the need for sun exposure. It is also a potent antioxidant, so it delays photo aging in a recent way. A recent analysis confides that a beta-carotene supplement helps prevent sunburns if it is taken 8-10 weeks before prolonged exposure to the sun.

□ HOW TO USE

Ensure that the skin area where the product is going to be applied is clean and dry, to ensure perfect adhesiveness.

1. Tear the envelope.
2. Separate the sides of the envelope.
3. Remove the sheets slowly.
4. Separate the protective sheet from the patch sheet.
5. Carefully peel off the womb and apply it directly to the skin. Leave on for 8 to 10 hours (overnight).
6. Replace the protective sheet on the matrix sheet and store them in the envelope.

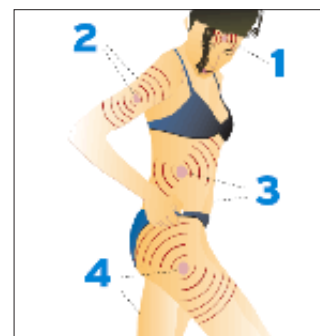
The application of the product must be rotary, covering the entire surface to be treated. In order to stimulate melanin integrally, it is recommended four key points:

1. Front
2. Arms
3. Back
4. Thighs

The next night another patch should be applied varying the application area.

It is recommended to start the treatment a minimum of 15 days before the first sun exposure. The optimal advance is 1 month. This period is necessary for the skin to assimilate the nutrients that are supplied and to be prepared for sun exposure.

The application can continue while receiving sunbaths.



□ PRESENTATION

1 sachet contains 28 patches with 4 sheets of 7 patches of 3.2 cm in diameter each.

□ CATEGORY PRODUCT

EU: cosmetic.